

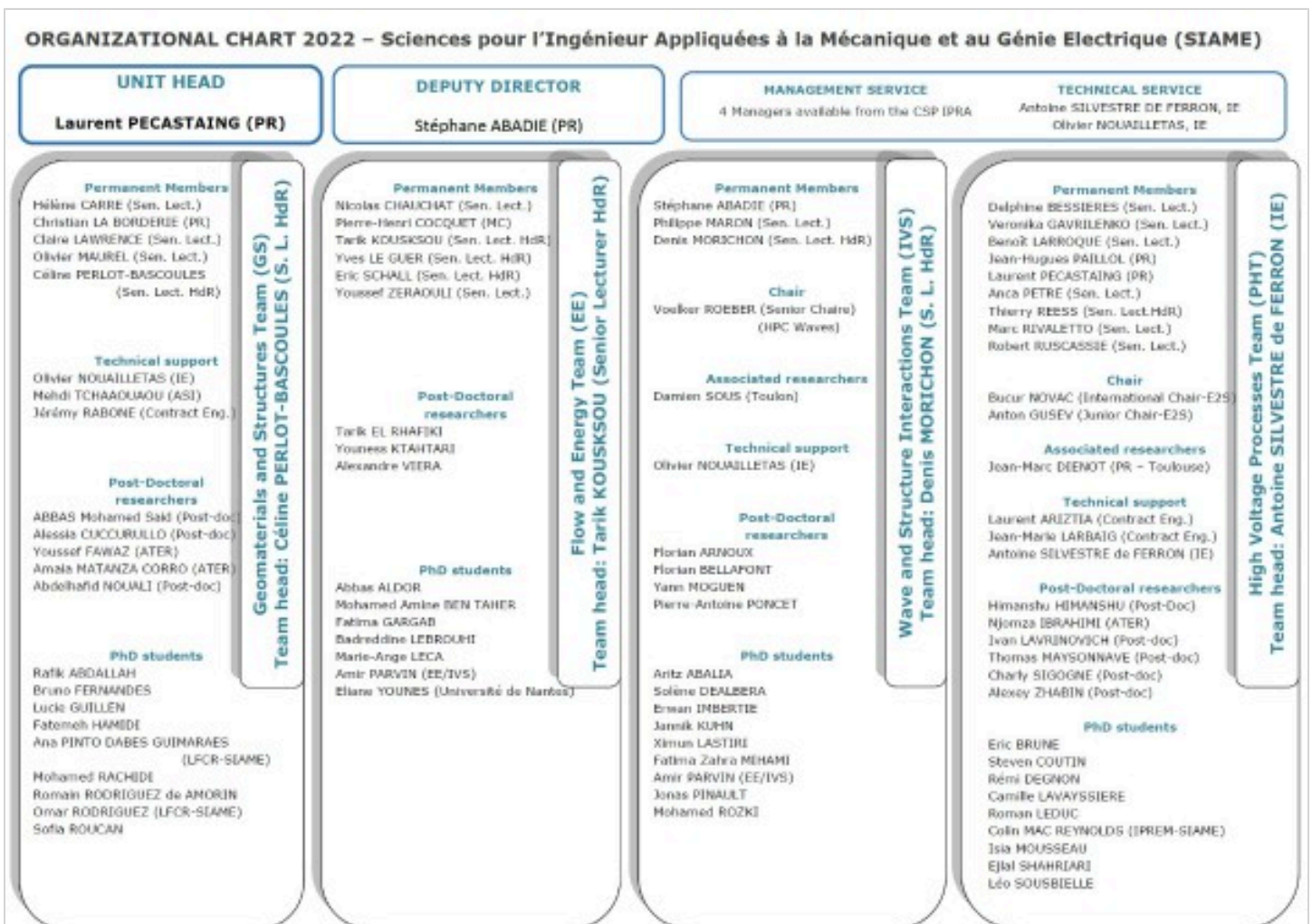
General presentation



The Laboratory of applied sciences in mechanics and electrical engineering is a resident research team (EA 4581) that belongs to the IPRA research federation.

It is divided into four teams:

- Flows and energetics team (EE)
- High voltage processes team (PHT)
- Geomaterials and structures team (GS)
- Wave-structure interactions team (IVS)



In 2021, the laboratory workforce included:

- * 29 professors / researchers
- * 7 engineers/assistant engineers
- * 1 Managers
- * 33 PhD students
- * 17 post-doctoral students

